



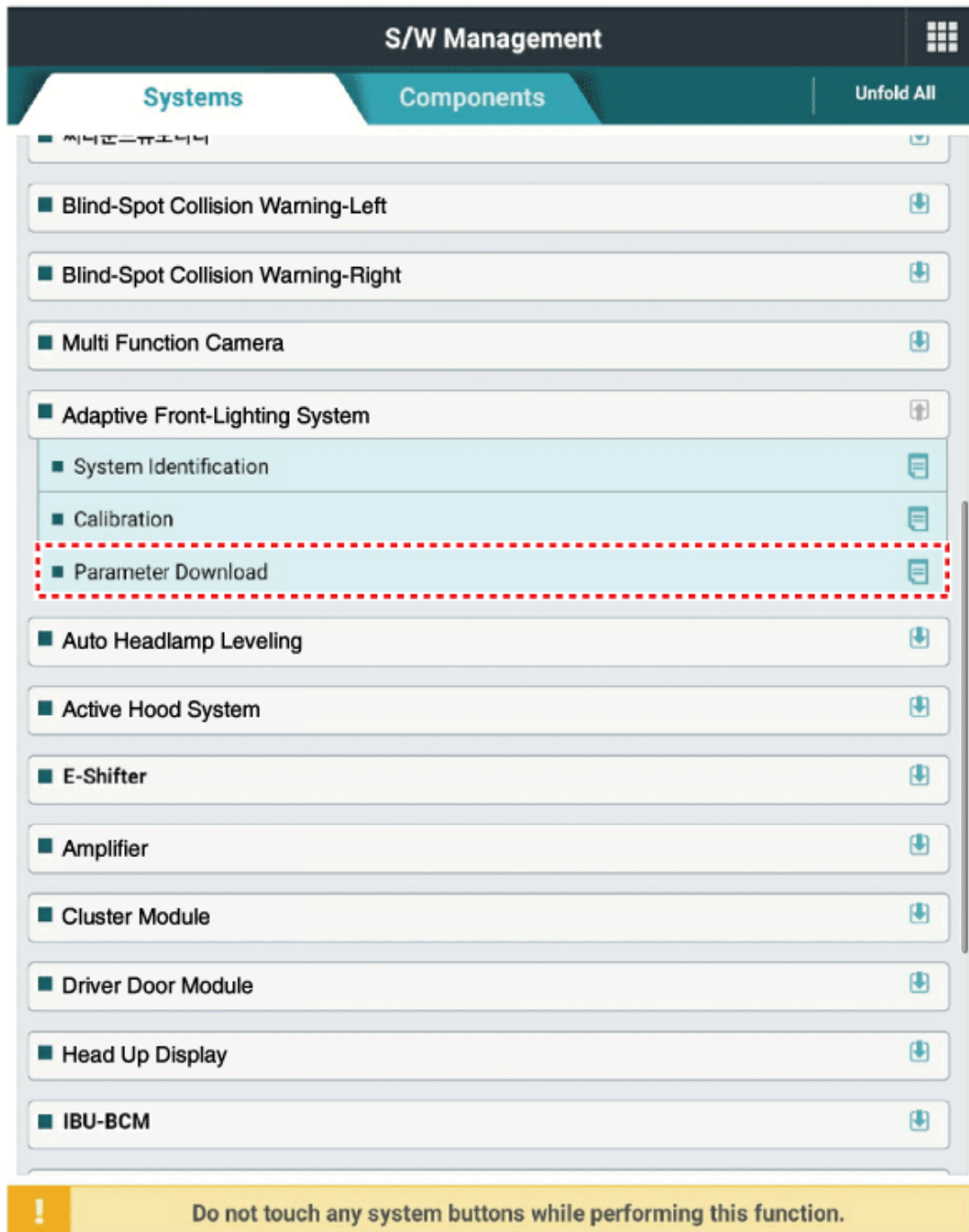
## Inspection

Initialization and diagnosis sequence by using diagnostic equipment

Below content summarize the procedure for A/S using Diagnostic equipment

## Download Parameter

1. Select "AFS" menu after selecting a vehicle.
2. Select "Parameter download" menu for define a characteristic of vehicle.



## S/W Management



## • Parameter Download

Purpose	To download all vehicle specific parameters.
Enable Condition	1. Parking on flat, no moving 2. No effect gear position 3. Normal battery 4. Light On(LOW) 5. AFLS Off 6. Diagnosis Tester Connected 7. Vehicle : Normal CAN Signal Connected
Concerned Component	Adaptive Front Lighting System(AFLS) ECU, Headlamps, Height Sensors
Concerned DTC	B1661XX
Fail Safe	Set DTC, Unable to operate system properly
Etc	-

OK



Do not touch any system buttons while performing this function.

## S/W Management

### ■ Parameter Download

#### ● [ Parameter Download ]

This function is used to download all vehicle specific parameters

##### ● [ Condition ]

1. Parking on the flat, Not Move.
2. Vehicle Speed ( speed signal < 5 km/h).
3. No effect in Gear Position
4. Diagnosis Tester Connected.
5. Vehicle - Normal CAN Signal Connected.
6. Battery Voltage > 10.5 V.
7. Light On (Low Beam).
8. AFLS Off(Autolight Switch positioned to OFF)

If you are ready, press **[OK]** button.

OK

Cancel



Do not touch any system buttons while performing this function.

S/W Management

■ Parameter Download

● [ Parameter Download ]

[ Data Write ]

1. Select the item to modify.

2. Select the value in combo box

3. Press **[OK]** button.

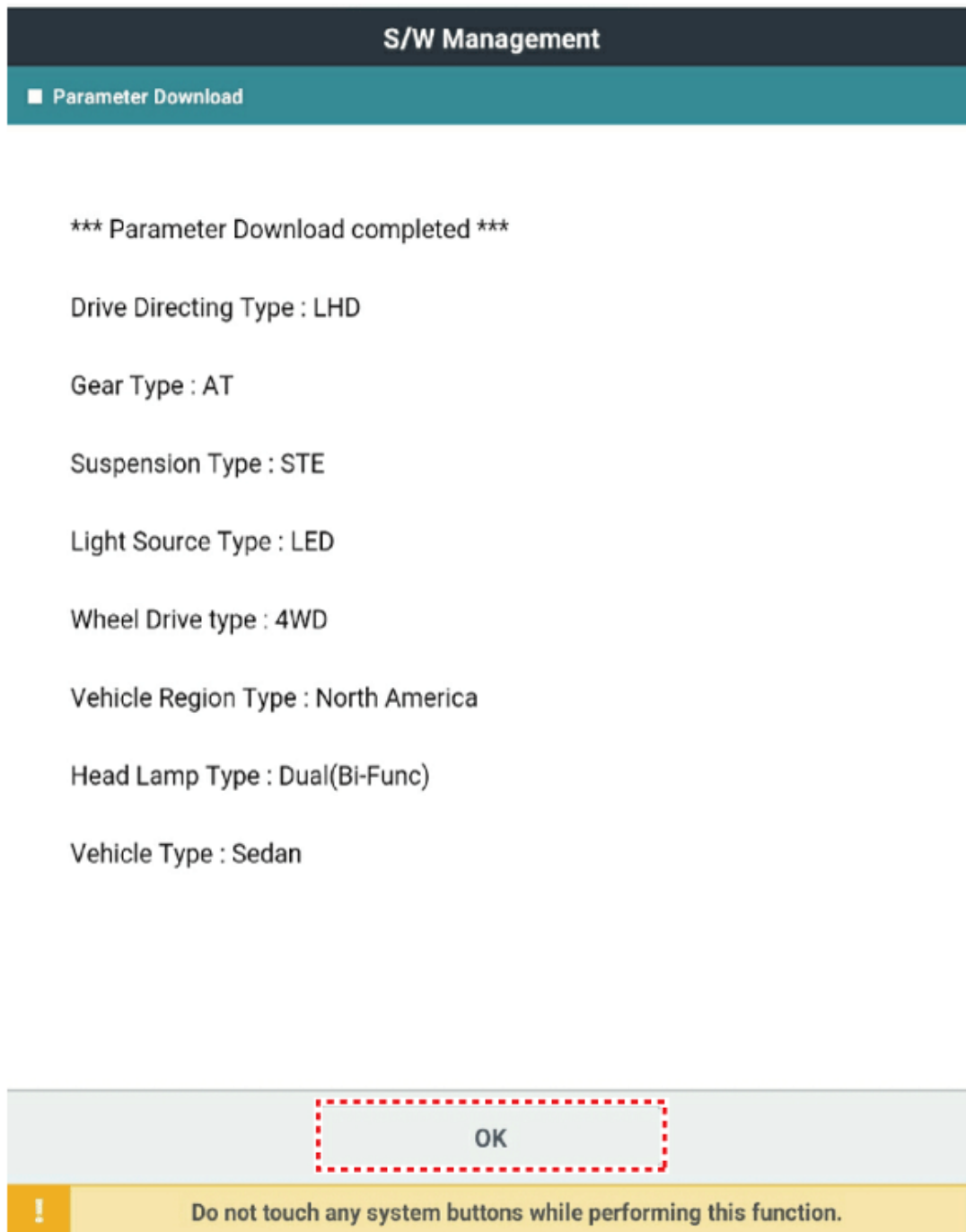
Item	Value
Drive Directing Type	LHD
Gear Type	AT
Suspension Type	STE
Light Source Type	LED
Wheel Drive type	4WD
Vehicle Region Type	North America
Head Lamp Type	Dual(Bi-Func)
Vehicle Type	Sedan

OK

Cancel

Do not touch any system buttons while performing this function.

3. When "Parameter download" is done,display belows.



## System Calibration

### CAUTION

This menu is applied only if vehicle has a Steel suspension

1. Select "AFS" menu after selecting a vehicle.
2. The KDS will show the AFS calibration function steps.

S/W Management

Systems

Components

Unfold All

시스템관리

Blind-Spot Collision Warning-Left

Blind-Spot Collision Warning-Right

Multi Function Camera

Adaptive Front-Lighting System

System Identification

Calibration

Parameter Download

Auto Headlamp Leveling

Active Hood System

E-Shifter

Amplifier

Cluster Module

Driver Door Module

Head Up Display

IBU-BCM

!

Do not touch any system buttons while performing this function.

## S/W Management



## • Calibration of Sensor

Purpose	To initialize the value of vehicle after replacing the AFLS ECU or height sensor.
Enable Condition	1.Engine Off 2.Ignition Switch On
Concerned Component	Adaptive Front Lighting System(AFLS) ECU, Height Sensors
Concerned DTC	B1637
Fail Safe	Set DTC, Warning Lamp On
Etc	This function is required when height sensors are replaced or adjusted.

OK



Do not touch any system buttons while performing this function.

3. When "System calibration" is done,display belows.



## S/W Management

### ■ Calibration

#### ● [ Calibration of Sensor ]

---

This function is to calibrate a sensor after doing operations as below.

- After replacing a height sensor

If you're ready, press **[OK]** button.

Press **[CANCEL]** button to exit.

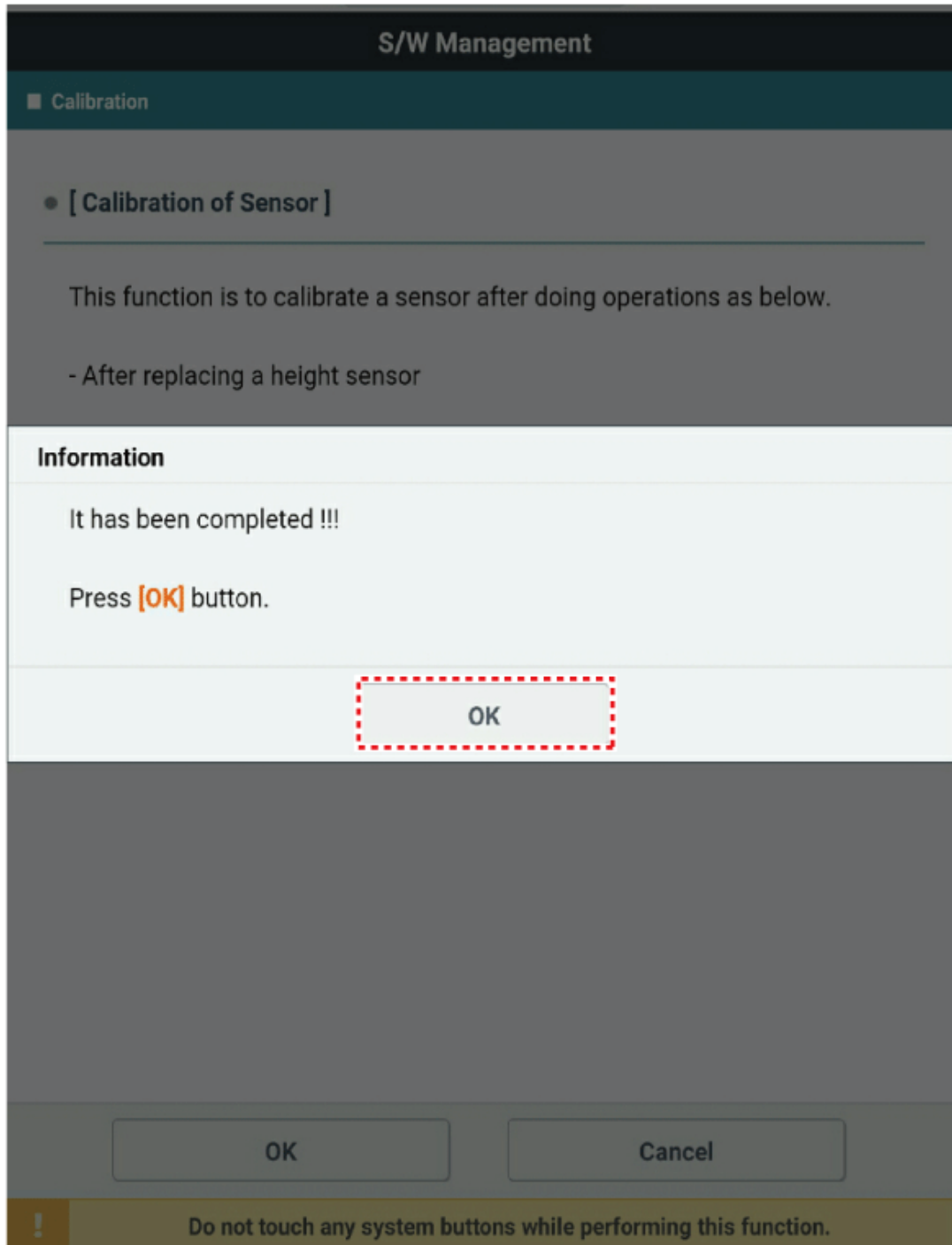
OK

Cancel



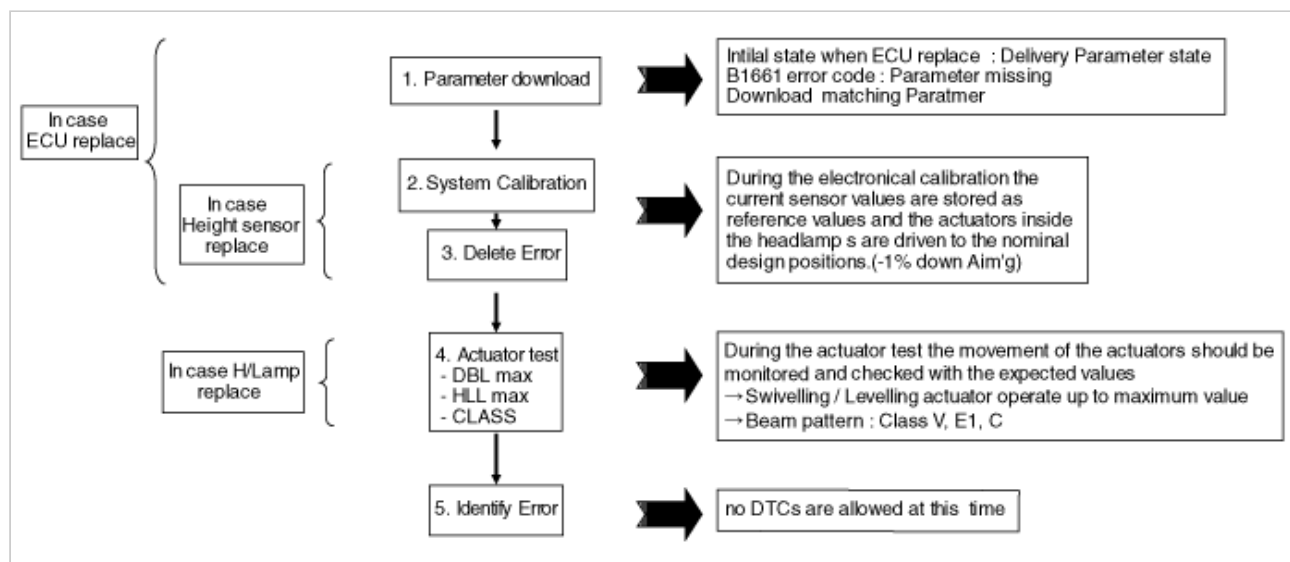
Do not touch any system buttons while performing this function.





## AFS Setting Procedure

When it replace AFS ECU or H/Lamp Unit or Height sensor, it operates in setting procedure by using Diagnostic equipment following belows.  
When AFS setting procedure operate, necessarily confirm suspension type and then download parameter.



※ DTC : Diagnostic Trouble Code

DBL : Dynamic bending Light

HLL : Head Lamp Leveling

## Vehicle Condition While AFS Setting

1. Vehicle on an even surface
2. No vehicle movement
3. Gear position in P & N
4. Ignition switched on & Engine RPM > 500 RPM
5. Diagnostic equipment connected
6. ALL ECUs on CAN mounted and activated
7. Battery voltage > 10.5 V ( ECU supply to be ensured)
8. Light switched
9. AFS ON or OFF

## Action In Case Of Download Wrong Parameter

1. Download Delivery Parameter
2. Check up B1661 (Parameter missing)
3. Ignition OFF
4. Ignition ON & Engine RPM > 500 RPM
5. Download matching Parameter